

# Amendments to the draft Gypsy and Traveller Accommodation Assessment

## Wellbeing Impact Assessment Report

This report summarises the likely impact of a proposal on the social, economic, environmental and cultural well-being of Denbighshire, Wales and the world.

|                                      |  |
|--------------------------------------|--|
| Assessment Number:                   | 154  |
| Brief description:                   | Changes are proposed to the draft Gypsy and Traveller Accommodation Assessment, initially approved in February 2015, following the undertaking of further research and assessment. |
| Date Completed:                      | 10/01/2017 15:07:11 Version: 1   |
| Completed By:                        | Angela Loftus  |
| Responsible Service:                 | Planning & Public Protection   |
| Localities affected by the proposal: | Whole County,  |

# IMPACT ASSESSMENT SUMMARY AND CONCLUSION

Before we look in detail at the contribution and impact of the proposal, it is important to consider how the proposal is applying the sustainable development principle. This means that we must act "in a manner which seeks to ensure that the needs of the present are met without compromising the ability of future generations to meet their own needs."

## Score for the sustainability of the approach

Could you do more to make your approach more sustainable?

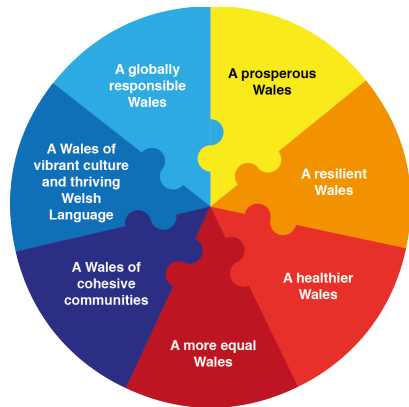
(2 out of 4 stars)



Actual score: 10/ 24.

## Summary of impact

Wellbeing Goals



|   |          |
|---|----------|
| A prosperous Denbighshire                                     | Neutral  |
| A resilient Denbighshire                                      | Neutral  |
| A healthier Denbighshire                                      | Positive |
| A more equal Denbighshire                                     | Positive |
| A Denbighshire of cohesive communities                        | Positive |
| A Denbighshire of vibrant culture and thriving Welsh language | Positive |
| A globally responsible Denbighshire                           | Positive |

## Main conclusions

The overall impact was considered Positive in terms of Health, Community Cohesion, and Welsh Language/Culture, Equality and Global Responsibility; Neutral in relation to Prosperity and Resilience. No Negative impacts were identified.

# THE LIKELY IMPACT ON DENBIGHSHIRE, WALES AND THE WORLD

## A prosperous Denbighshire

|                           |   |
|---------------------------|---|
| Overall Impact:           | Neutral   |
| Justification for Impact: | The report outlines proposed changes to the draft Gypsy and Traveller Accommodation Assessment following the undertaking of further research. How the conclusions are addressed will be subject to further reports and decisions once the assessment has been approved by Welsh Government. |

**Positive consequences identified:**

**Unintended negative consequences identified:**

**Mitigating actions:**

## A resilient Denbighshire

|                           |   |
|---------------------------|---|
| Overall Impact:           | Neutral   |
| Justification for Impact: | The report outlines proposed changes to the draft Gypsy and Traveller Accommodation Assessment following the undertaking of further research. How the conclusions are addressed will be subject to further reports and decisions once the assessment has been approved by Welsh Government. |

**Positive consequences identified:**

**Unintended negative consequences identified:**

**Mitigating actions:**

## A healthier Denbighshire

|                           |   |
|---------------------------|---|
| Overall Impact:           | Positive  |
| Justification for Impact: | The report outlines proposed changes to the draft Gypsy and Traveller Accommodation Assessment following the undertaking of further research. How the conclusions are addressed will be subject to further reports and decisions once the assessment has been approved by Welsh Government. Gypsies and Travellers often have poor health compared to the general population and provision of authorised sites would help to support existing family networks and provide a decent quality living environment, encouraging and supporting health and wellbeing. |

### **Positive consequences identified:**

Gypsies and Travellers often have poor health compared to the general population and provision of authorised sites would help to support existing family networks and provide a decent quality living environment. The full and robust consideration of Gypsy and Traveller accommodation needs will have a positive impact on Gypsy & Traveller emotional & mental well-being, especially where current living arrangements are causing difficulties.

### **Unintended negative consequences identified:**

### **Mitigating actions:**

## A more equal Denbighshire

|                           |   |
|---------------------------|---|
| Overall Impact:           | Positive  |
| Justification for Impact: | The report outlines proposed changes to the draft Gypsy and Traveller Accommodation Assessment following the undertaking of further research. How the conclusions are addressed will be subject to further reports and decisions once the assessment has been approved by Welsh Government. |

### **Positive consequences identified:**

The full and robust consideration of Gypsy and Traveller accommodation needs will have a positive impact on improving the well-being of Gypsy & Traveller families in the County, especially where current living arrangements are causing difficulties.

Gypsies and Travellers often have poor health compared to the general population and provision of authorised sites would help to support existing family networks and provide a decent quality living environment, whilst ensuring access to health facilities.

### **Unintended negative consequences identified:**

### **Mitigating actions:**

Addressing the accommodation needs of the Gypsy and Traveller community would help to reduce health inequalities, tackle poverty and improve their well-being.

## A Denbighshire of cohesive communities

|                           |  |
|---------------------------|--|
| Overall Impact:           | Positive   |
| Justification for Impact: | Identification of potential authorised sites, which can be managed and maintained may reduce the occurrence of unauthorised encampments. |

### **Positive consequences identified:**

Delivery of decent accommodation could lead to less unauthorised encampments. Reduction of issues for private landowners subject to unauthorised encampments

Identification of potential sites will be subject involvement with the Gypsy & Traveller community and wider public consultation.

Authorised sites could be better managed and maintained than unauthorised encampments.

Well designed and landscaped authorised sites, which are well managed & maintained potentially more attractive and less intrusive than unauthorised encampments

### **Unintended negative consequences identified:**

Identification of potential sites for Gypsies and Travellers is likely to be controversial

### **Mitigating actions:**

Ensure that the Gypsy and Traveller community and wider community are involved with identifications and selection of potential sites.

## A Denbighshire of vibrant culture and thriving Welsh language

|                           |  |
|---------------------------|--|
| Overall Impact:           | Positive   |
| Justification for Impact: | Gypsy and Traveller communities have a strong culture and traditions and identification of their accommodation needs will help to support their culture and traditional way of life. |

### **Positive consequences identified:**

The identification of accommodation needs of Gypsies and Travellers will help to support their traditional culture and way of life.

### **Unintended negative consequences identified:**

### **Mitigating actions:**



## A globally responsible Denbighshire

|                           |  |
|---------------------------|--|
| Overall Impact:           | Positive   |
| Justification for Impact: | It is important to consider the needs of this minority group, in order to contribute to the protection of their human rights |

### **Positive consequences identified:**

The full and robust consideration of Gypsy and Traveller accommodation needs will support the human rights of Gypsies & Travellers

### **Unintended negative consequences identified:**

### **Mitigating actions:**